



## Did You Know?

That Sugar Glider have the ability to glide for over 100m , using the skin that is between their limbs. They use their tail as a rudder as they glide. They feed on both insects and the flowers and sap from trees. They create a nest using leaves and sticks which they place in the hollow of a tree. Quite often these nests will have several animals living in them both adults and young. The grow to about 40cm in length weighing only 150gm and are found all along the east coast of Australia.

## Visit Chambers Reserve NOW

Spring is finally here!

It has been a long winter and one of the wettest for many years. This means that we should have many of the native plants and flowers blooming that we have not seen for several years.



a recent survey of Chambers reserve relieved that we have several rare and venerable species of native orchards. Spring and summer are the best times to look for

these and many other native plants.

Plants are not the only things you may see during a stroll through Chambers Reserve you may also see the elusive Lyrebird in the Northern end of the reserve . The are

fantastic mimics and male can copy up to a dozen different type of bird calls and noises this is usually at the beginning of the day during breeding season.



# Toomuc Landcare Newsletter

## Proudly sponsored by Melbourne Water

### 2010

### Up coming Events

- **Beaconsfield Nature Reserve BBQ and spring flower walk**
- **When :Saturday**
- **2nd October**
- **10 am to 3 pm**
- **Guest Speakers**
- **Guided Nature walks**
- **Kids Activities**
- **Numbers are limited must RSVP by 27th of September**
- **Ph 59418446 DON'T MISS THIS**

- **Pittosirum control day**
- **Where : Thewlis Rd**
- **16 th October**
- **Time 10am**
- **Bring gloves and saw to be shown how to remove and kill pittosrum**

### This newsletter

**It has been 2 years since our last newsletter, so this is a great opportunity to reflect on some of the great results the community has achieved over the last several years within the valley. There has been dozens of kilometres of fences erected, many tens of thousand native trees and shrubs planted and countless thousands of weeds destroyed. All of this has been achieved with good humour and community sprit which is rare these days .Most of this newsletter is to illustrate the results of labour and encourage others to participate.**



### OPERATION PLATYPUS

One of the great dreams of the Landcare group was that one day the Platypus would be released back into the Toomuc Creek. This has come one step closer with the owners of Seven Oaks agreeing to fence off a huge section of the creek to stop

cattle accessing the creek. The dream was also shared with members of Beaconsfield School and several students are going to spend some of their school holidays planting trees along the creek , which we think is a great effort. Hopefully within a few years we should be able to show that the creek is healthy environment for these amazing animals. So if you see a group of kids along the creek in the next few days as you drive along Toomuc Valley Rd give them a toot to show your support, and again another big thanks to the Robinson family for making this dream a reality.

### Membership now due .

**Existing members your \$10 annual fee is now due and payable to our Treasurer Joy Carberry Ph : 59 427 298. For anyone looking to join this is all that is required and this money goes to new equipment and or plants that members are entitled to use. By joining you can also have your property assessed for possible grants for both fencing and plants which can be worth thousands of dollars.**

**You don't have to be Green to join, just care.**



*What bird is that*



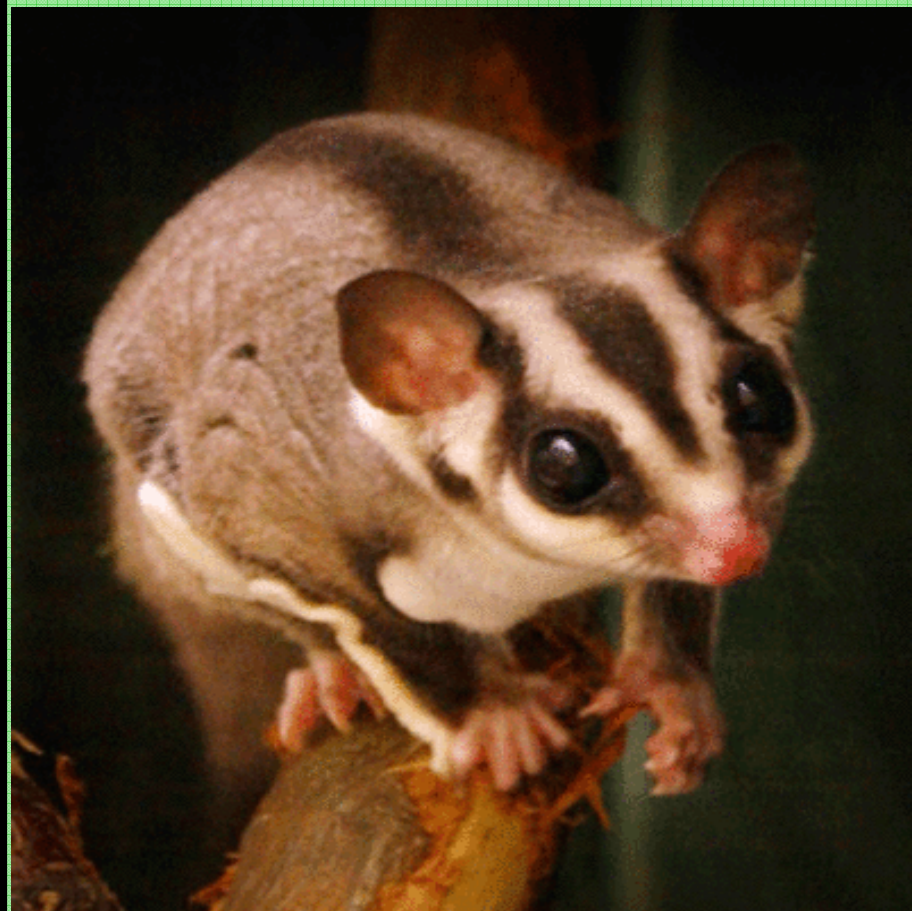
### *Fantail Cuckoo*

*One of the great thing about different bird species is that you only tend to see some of them at certain times of the year, and they tell you when the seasons are changing. Then Flame Robin only appears at the beginning of winter and the Fantail Cuckoo only tends to be seen and heard with the arrival of spring. This bird is a parasite as it uses other birds to rear it's young. The cuckoo will lay it's own egg in an unattended nest when the young hatch the cuckoo chick will push the other young or eggs out, so it gets all the food and guarantees it's survival. This makes the cuckoo very un popular with other bird species and is often attacked by other birds.*

For more information on this and other birds in the area you can obtain Birds of Cardinia from the Cardinia council  
Free of charge.

# **What a Result !!**

*Last year we constructed about a dozen nest-boxes as a trial run for project 100( read article) we used the template from the previous newsletter. The nestboxes were design to accommodate crimson rosellas or Eastern Rosella. Usually it may take up to 12 to 24 months for birds to use the boxes. Over the last year several of the boxes on several different properties have had parrots investigating the boxes and hopes were high that this season they maybe used for breeding. Recently after some of the storms we have had we had a walk around the property to check that no trees had fallen over the fences. While doing this we had a look at the nestboxes and to our surprise one of the boxes had not one but two Sugar Gliders. This just shows how*



## **Hair Tubing .**

Last year we held a workshop at the hall at Leppitt Rd which was called WILDLIFE DETECTIVES it was a joint venture with Toomuc Landcare and the Cardinia Environmental Coalition . It was to show different methods of detecting what wildlife is in the area. The day started with a slide show of various photos of animals detected with infrared cameras at night.

Very fascinating. We then had a workshop to make HAIR TUBES which is where PVC pipes are cut into short lengths and baits are placed in these tubes by putting doubled sided tape on the end of the tubes animals that come in for the baits leave hair on the double sided tape which can later be analysed to tell what type of animal was there. After the assembly of several kits we moved to the Waterhouses' property on Pakenham/ Emerald Rd. here we spread out to place the tubes all around the property, baited and ready for action . Meryl and Keith put on a magnificent meal and explained how over the years the turned their property from a relatively barren property into Mecca for all types of wildlife that it is today. The whole day was not only informative but also enjoyed by all those who attended and several weeks later it was discovered that nearly half the tubes had hair samples.

## **Frog Census.**

Melbourne water are currently trying to conduct another frog census for Autumn. This time they have decided to target 2 species in particular one of which has been known to frequent these areas. Melbourne water has provided a frog kit to the landcare group. This was a series of forms and tapes to record frog croaks at night. If you would like to know more or would like to see the results of the current survey please contact Melbourne water on [.melbournewater.com.au/frogs](http://melbournewater.com.au/frogs),

**Project 100**  
**Toomuc Landcare is currently doing a joint venture project with Beaconhills School where we are having a campaign to build a distribute 100 nestboxes within the Tommuc Valley.**  
**It is hoped these boxes will be constructed by the students later this year.**  
**The boxes should suit Rosella Galahs and Possums.**

## **Aqueduct Trail**



### **BEFORE**

Looking Good

The aqueduct trail that runs from Thewlis road to the Beaconsfield Reservoir has come along way in a short period of time. Once a sea of pittostriums now after several large scale clearing and many more thousands of dollars paid to contractors by Toomuc Landcare the trail is now being return to its former glory and the native bush is coming back with vengeance.

### **AFTER**

